



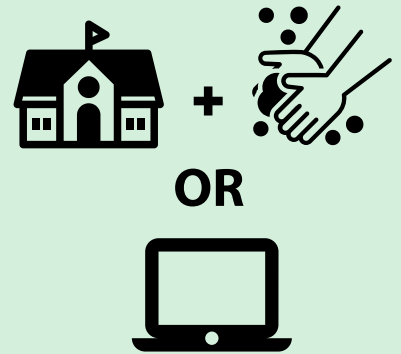
Returning to School 2020-21

The Greene County School System is committed to maintaining the highest standards of teaching and learning while prioritizing the health and safety of our students and staff. We are eager to return to school, but we are conscious of the concerns and uncertainties that remain ahead of us. Based on "Georgia's Path to Recovery for K-12 Schools," the Greene County School System has developed three **tentative** options for returning to school for the 2020-21 school year. Each option below is based on the level of virus spread specifically identified for Greene County, as determined by the Georgia Department of Public Health.

Low or
No Spread

Option 1 - Preferred

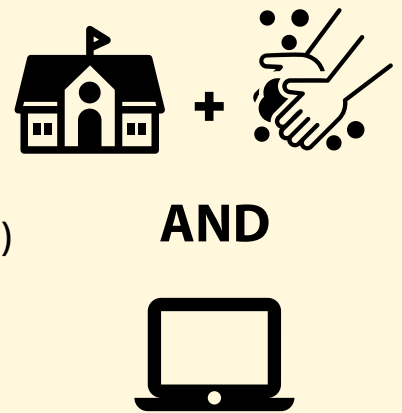
- Students and staff return for full-time face-to-face instruction
- Optional distance learning
- Preventative health & safety measures



Minimal or
Moderate
Spread

Option 2

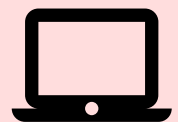
- Face-to-face instruction for Pk-3rd grade with rotating on-campus schedule (A/B days)
- Distance learning for 4th-12th grade with opportunities for face-to-face supplemental small group instruction (labs and remediation)
- Chromebooks provided to every student
- Optional distance learning for Pk-3
- Preventative health & safety measures



Substantial
Spread

Option 3 - Least Ideal

- Distance learning for all students and staff
- Chromebooks provided to every student



It is our responsibility as an academic institution to provide a reliable and effective learning experience for our students each year while balancing the implications of the evolving COVID-19 pandemic. Preventative measures will be implemented in schools and on buses to mitigate the spread of the virus. We will share more information and guidance via the district website and app as it becomes available.